



GeneType does not provide Direct to Patient Testing and therefore will not accept test requests directly from the patient.

A product of Genetic Technologies Limited (Nasdaq: GENE)

Phenogen Sciences, Inc.
1300 Baxter Street
Suite 157
Charlotte, NC 28204

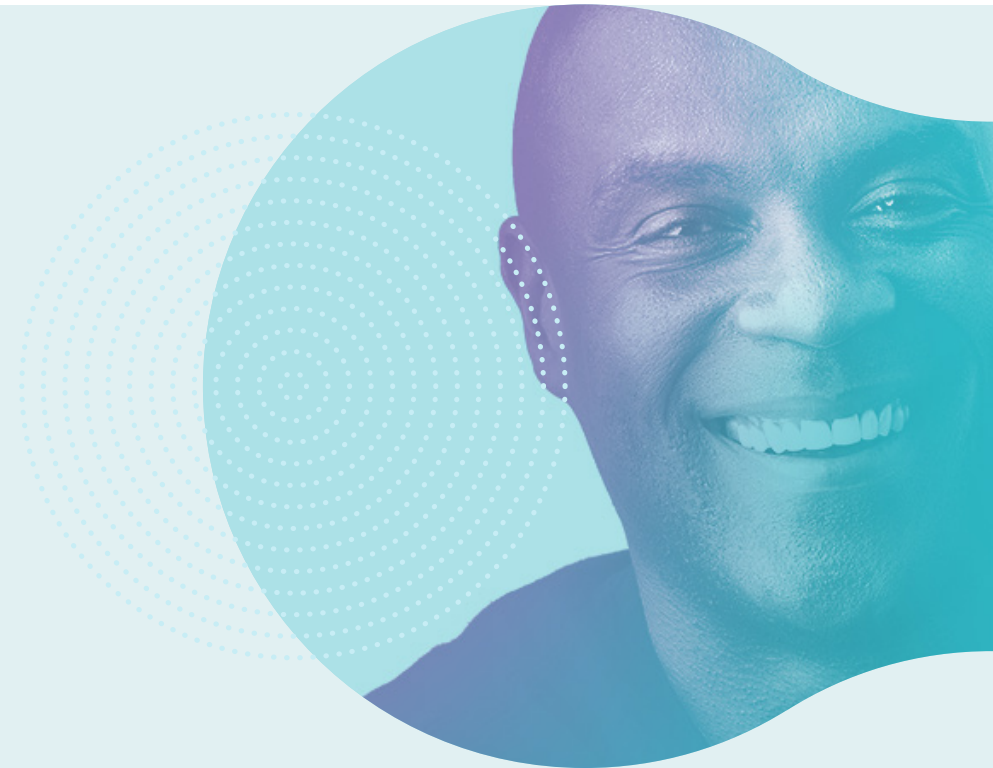
P 704-926-5700
F 855-283-2360
www.genetype.com

V1 Apr 2019

GeneType

Specimen Collection and Transportation Instructions

For buccal (cheek) cells with ORAcollect swab

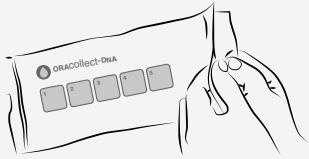


GeneType

Specimen Collection Instructions

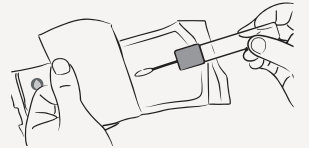
For GeneType testing, the patient cheek cells should be collected with the ORACollect specimen collection swab and tube.

Note: Wait at least 30 minutes after smoking, eating or drinking before collecting the specimen. Please ensure instructions are strictly followed or specimen will be rejected.



Step 1

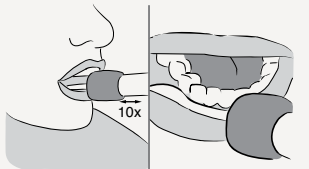
Open the package from the end with the 'Open Here' arrow.



Step 2

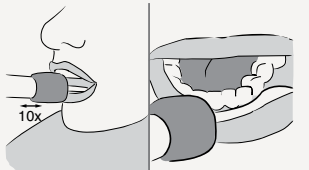
Remove the Collector by its handle.

IMPORTANT: Ensure the sponge tip does NOT touch any surface prior to collection as the test results will be invalid.



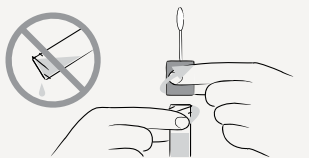
Step 3

Place swab tip comfortably inside patient's mouth and rub lower gums on one side firmly 10 times in a back and forth motion.



Step 4

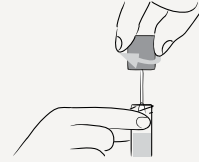
Repeat rubbing motion on the opposite side of the mouth for another 10 times.



Step 5

Hold the tube upright to prevent the blue liquid from spilling. Unscrew the blue cap from the tube.

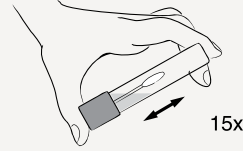
CAUTION: Do not spill contents (solution) as this is required for testing. Avoid contact with eyes and skin as solution may cause irritation.



Step 6

Turn the cap upside down.

Insert the sponge into the tube and close cap tightly.



Step 7

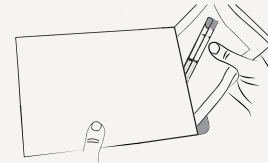
Invert the capped tube and shake vigorously 15 times.



Step 8

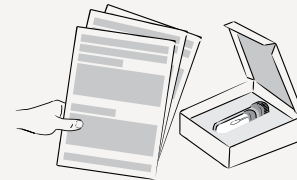
Write the patient's name, date of birth and, if available, medical reference number (MRN) on 1 of the provided labels, then have the patient sign the label. Affix completed label to outside of the tube.

NOTE: Sample cannot be accepted without this information.



Step 9

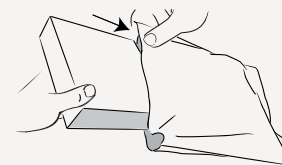
Place specimen collection tube into the biohazard bag with the absorbent sheet and seal the bag. Place biohazard bag inside test kit sleeve.



Step 10

Place the completed Test Requisition Form into the test kit.

IMPORTANT: The testing documents should be completed by the requesting healthcare provider ONLY.



Step 11

1. Place the test kit into the Courier transport bag and seal.
2. Adhere the pre-paid return transport label to the transport bag.
3. Contact FedEx at 1.800.GoFedEx (1.800.463.3339) if needed to request specimen pickup.

Retain a copy of the Tracking Information from the Courier company after pickup. Test results will be sent back to the requesting Healthcare Provider named on the Test Requisition Form.